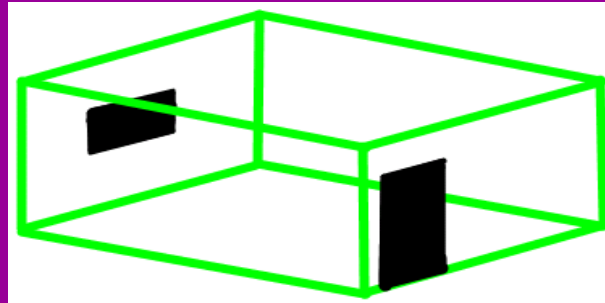
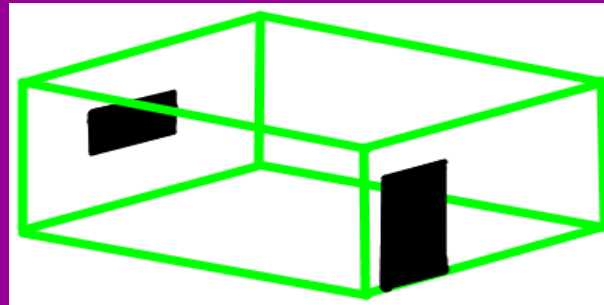
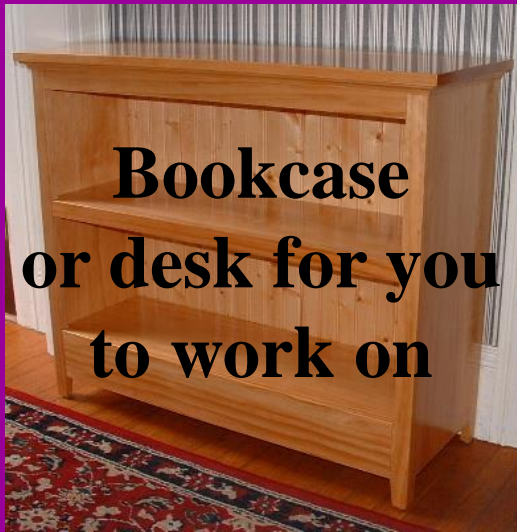


What does Your Bedroom Cost?

What things go into your bedroom?



L.Obj: to plan and price
a bedroom



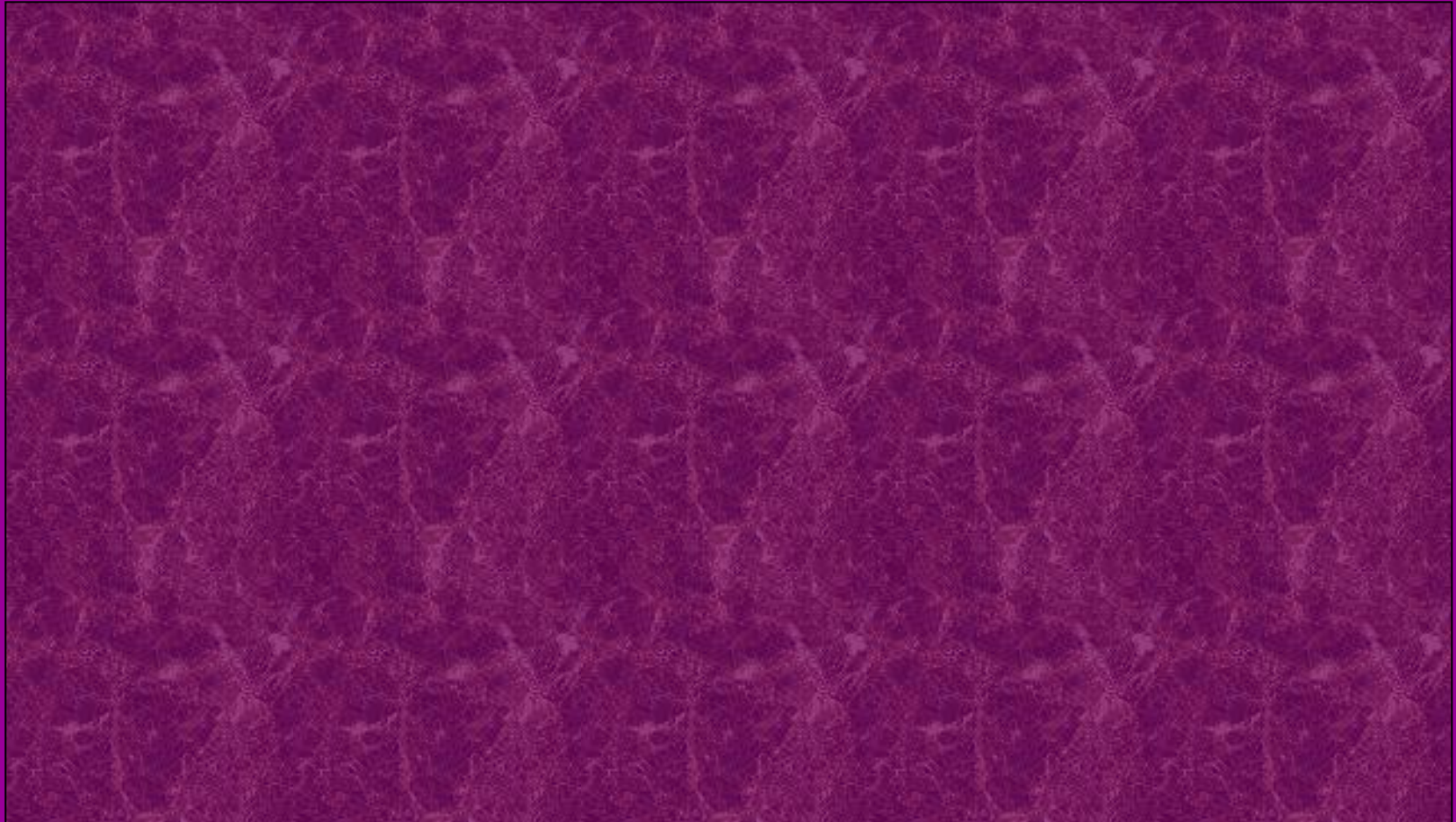
**A Carpet or
laminare flooring**



**You will also need a chair or beanbag and some paint
or wallpaper for the walls!!!!**

L.Obj: to plan and price
a bedroom

**You will use lots of different types of Maths in your
project, but which topics?**



You will use lots of different types of Maths in your project, but which topics?

**Area
for the walls
and floor**

**Budgeting
To stay inside
the amount of
money you have**

**Geometry
in drawing your
plan when the
room is complete**

**Display
to show what
you have done**

L.Obj: to plan and price
a bedroom

You will need to produce a plan of your room with the maths that you used for each of the different parts of the room.

Using the brochure given to you, you need to choose.....

What type of bed you have. Single or Double?

What will be on your floor?

Carpet or Laminate flooring?

Do you want a rug as well?

Will you have Painted walls or wallpaper?

Which games unit you have

What storage will you have in your room?

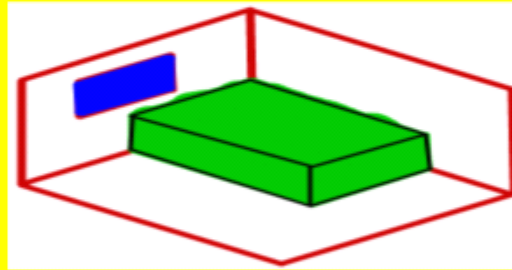
L.Obj: to plan and price a bedroom

My Bedroom Design

**Wall
Maths**

**Furniture
Maths**

**Plan of your room
(Geometry)**



**Floor
Maths**

**Budget
Maths**



L.Obj: to plan and price
a bedroom

**How you do
it is up to you**

**Just like the
look of your
bedroom!**



You have £750 to spend on your bedroom.

This is known as your Budget

Bed	£ 219.99
Bedside Cabinet	£ 18.99
Wardrobe	£ 29.99
Chest of Drawers	£ 69.99
Dressing Table	£ 152.99
TV Unit	£ 26.99
Seat	£ 99.99
Wallpaper	£ 117.00
Carpet	<u>£ 170.00</u>
Total	£ 905.93

**Your total
has to be
under £750!**

**This will not
be easy!**

You MUST have in your bedroom

**A bed (with a mattress if not included),
wall covering (paint or wallpaper),
floor covering (Carpet or Wood Effect),
bedside cabinet, chest of drawers,
wardrobe (min 0.5m³), bookcase,
chair, entertainments unit,
and a desk or dressing table.**

**If you have any spare cash you might consider
upgrading the items in your room.**

You are about to be given a booklet with items that are acceptable to your parents/guardians.

You can choose any combination of Bed and other items, as long as you do not go over £750.

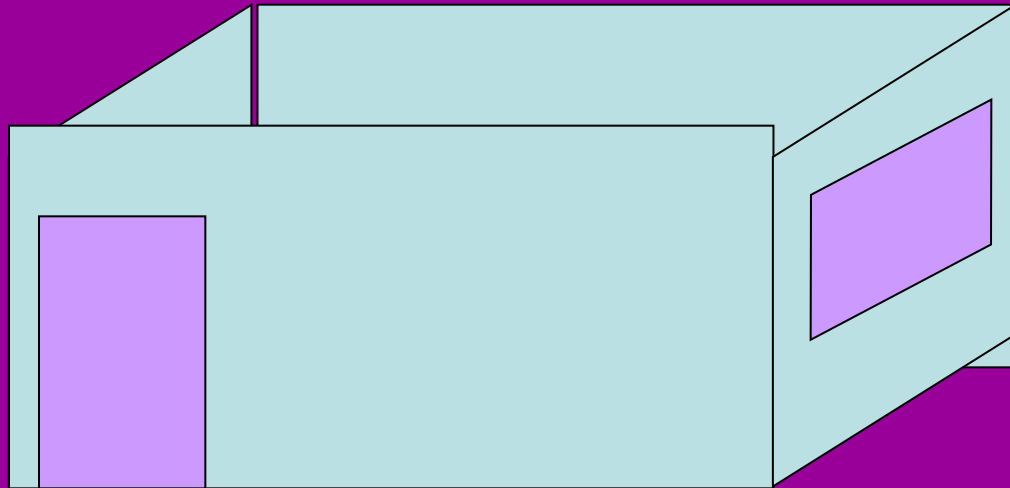
You do not get to keep any spare money if you do not spend it!

Your first task is to calculate the area of the floor and the walls (less the window and door!) so that you can calculate the cost of the wall and floor decorations.

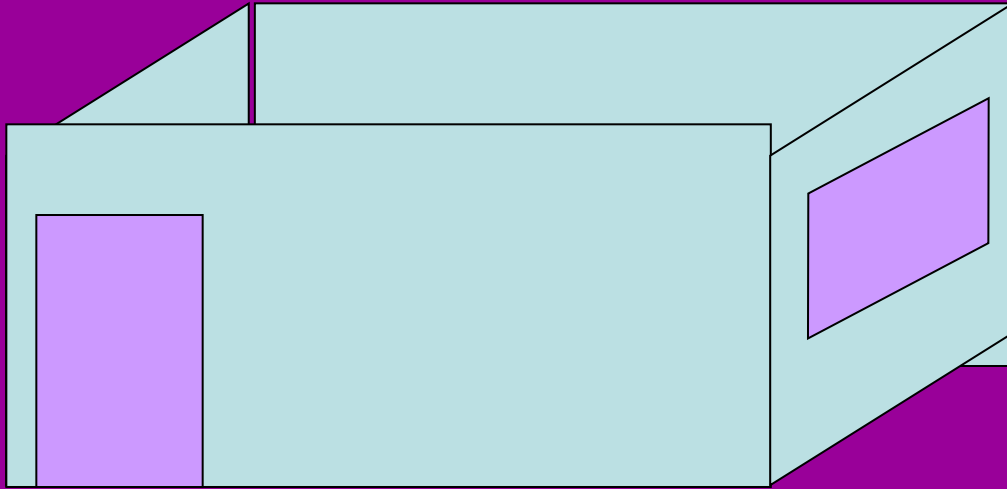
Your bedroom is 4 metres wide by 2.5 metres tall by 5.5 metres long.

There is a window 80cm tall by 1 metre wide.

The Door is 2 metres tall and 80 cm wide.



L.Obj: to plan and price
a bedroom



When you design your room make sure the door can open and that you have enough space to put in the wardrobes and bed etc.

When you have completed the design and budget, make sure there is enough room for you to live!

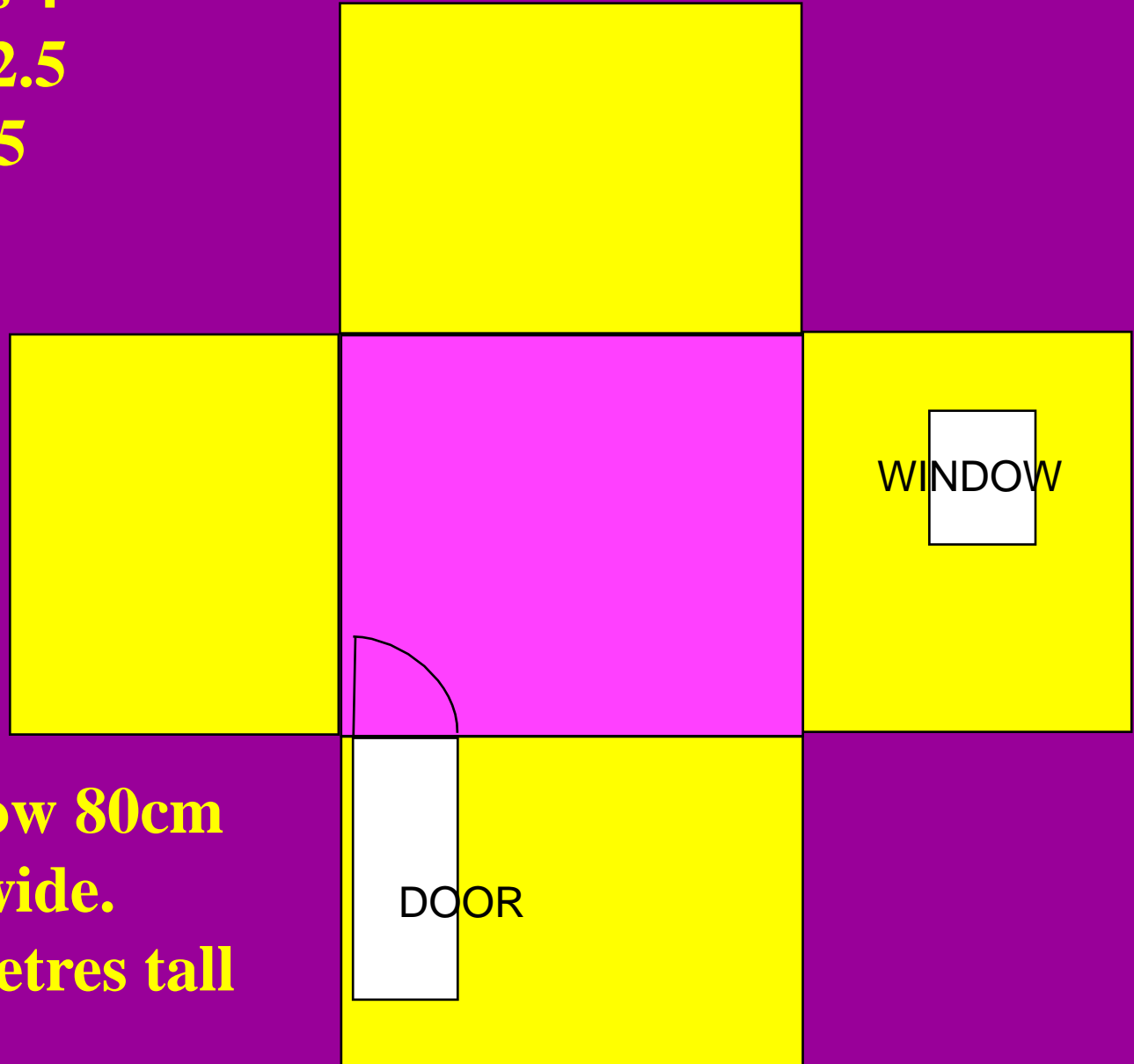
L.Obj: to plan and price
a bedroom

Now it's

Up to YOU

L.Obj: to plan and price a bedroom

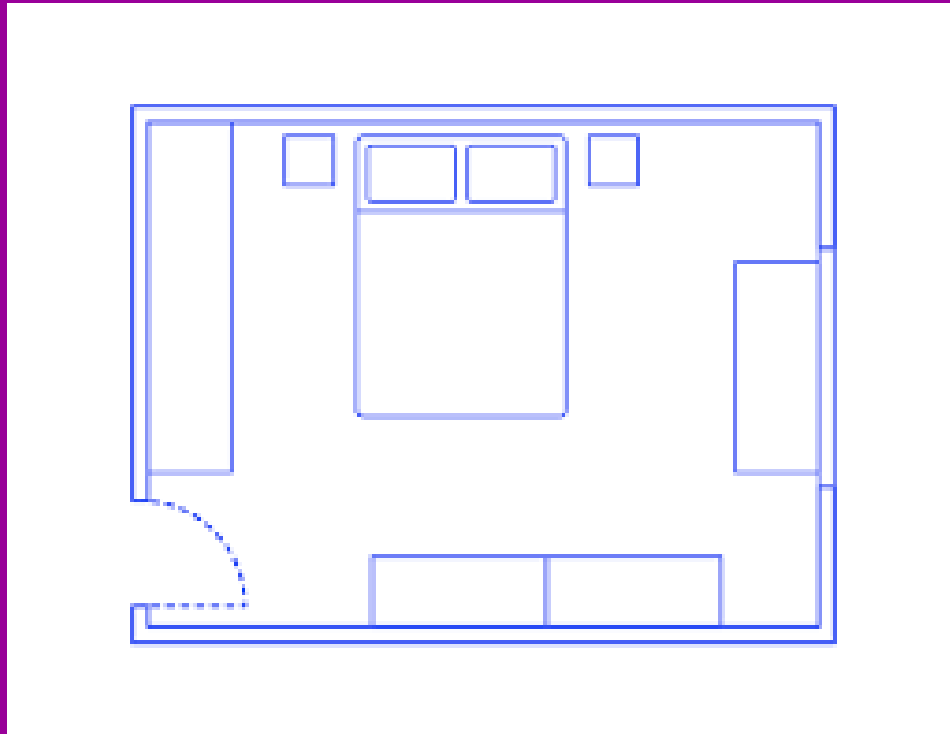
Your bedroom is 4 metres wide by 2.5 metres tall by 5.5 metres long.



**There is a window 80cm tall by 1 metre wide.
The Door is 2 metres tall and 1m wide**

L.Obj: to plan and price a bedroom

Once all of your costings are complete, You need to draw a floor plan of your bedroom. This needs to be scaled correctly using a scale of 4cm to 1m (1:25). A floor plan is a bird's eye view of your room, just like the one below:



You will need to label the furniture and ensure that you leave enough room for the door to open.

Use the squared paper provided.

L.Obj: to plan and price
a bedroom

Your next task is to build a scale model of your room. Use cardboard/ paper/ shoe boxes/ pizza boxes/ empty kitchen rolls/ cereal boxes etc. Make sure that you stick to your scale of 4cm to 1m